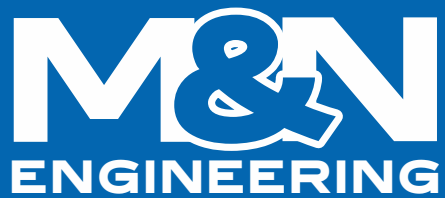


M&N ENGINEERING



CNC Cutting & Engraving

• Laser • Plasma • Router



Who we are

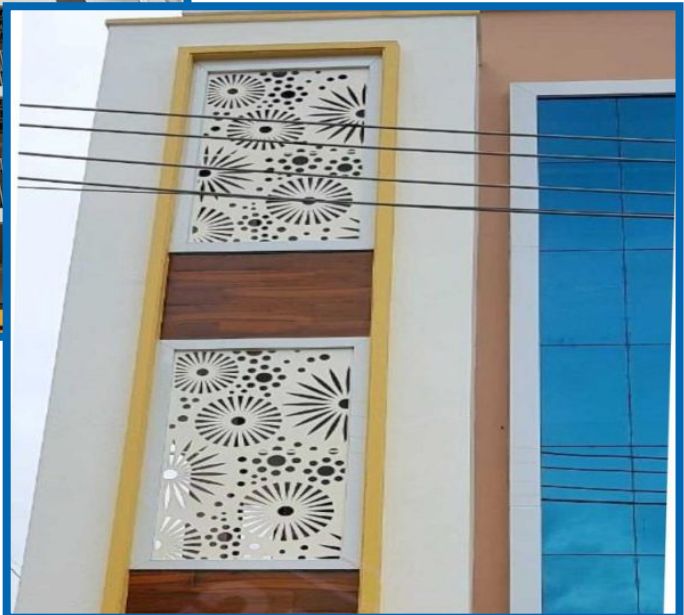
We design, cut, fabricate and install CNC cut building additions using metal and non-metal materials.

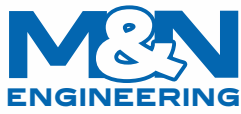
We also cut and fabricate machine parts (sprockets, gears, brackets, footings etc).

We operate automated CNC Laser, Plasma and Router at Estate Junction, Kpone Road-Tema.

Our Products

The possibilities of our designs are endless and at the same time we design to fit any dimension of your choice on any material; ranging from Mild Steel , Galvanized Steel , Stainless Steel, Aluminium, Aluminium Composite Boards, MBF, Plywood, PVC Foam Boards.

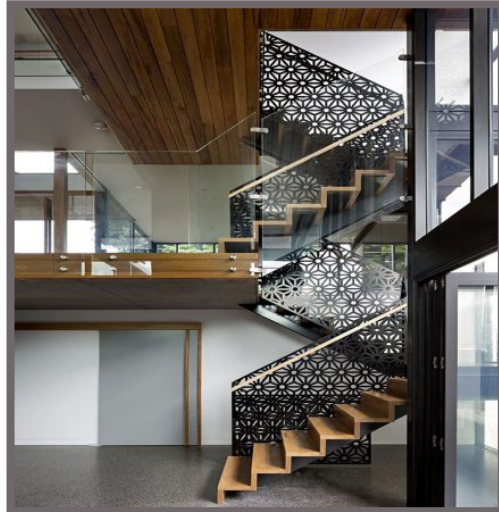
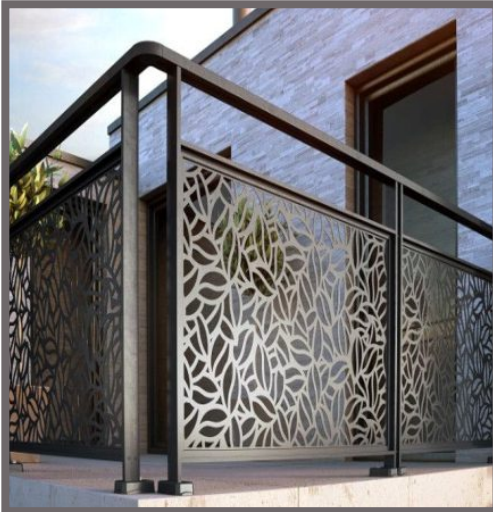
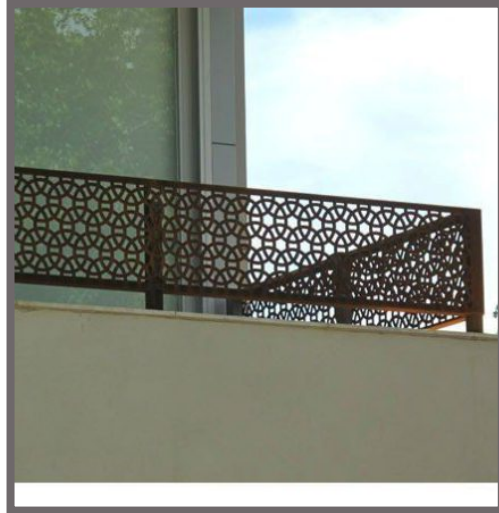
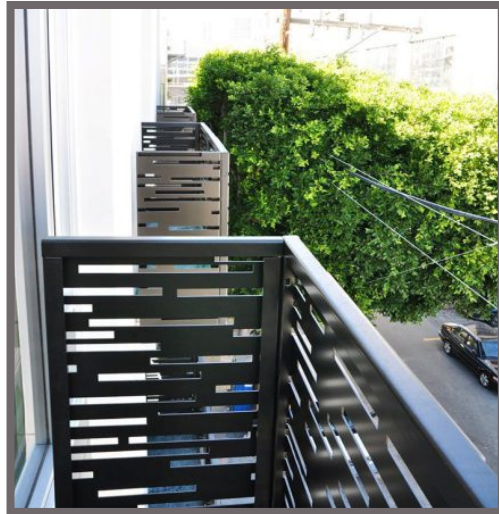




BALCONY RAILS

(Steel Panels; 1mm - 8mm)

(Aluminium Panels; 3mm, 4mm, 5mm)

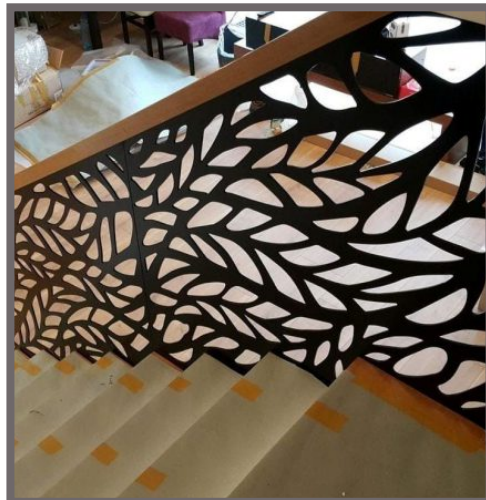
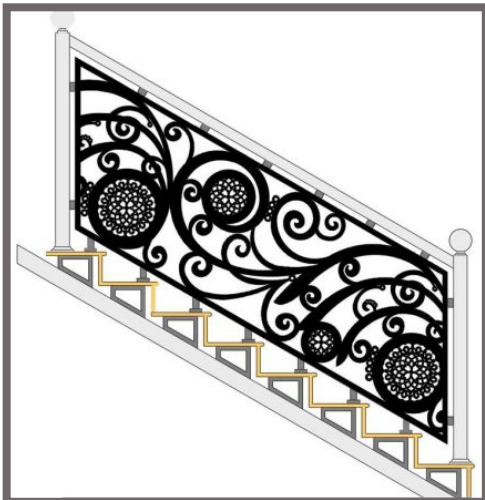




BALUSTRADES

(Steel Panels; 1mm - 8mm)

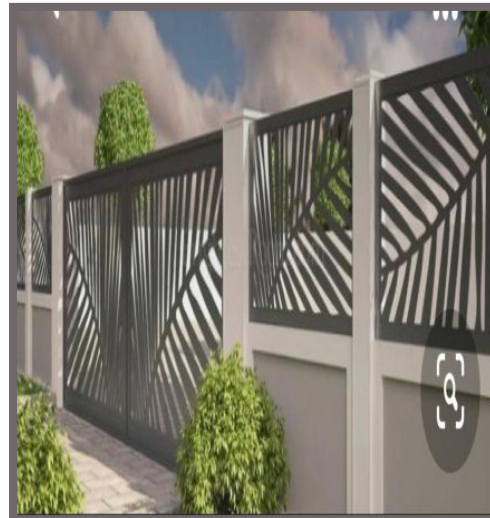
(Aluminium Panels: 3mm, 4mm, 5mm)

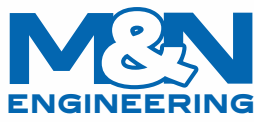




GATES AND FENCE GRILLES

(Steel Panels: 1mm - 8mm)

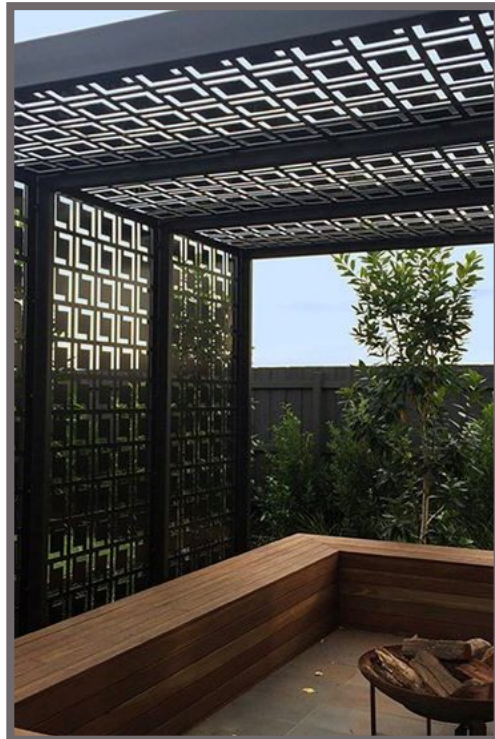
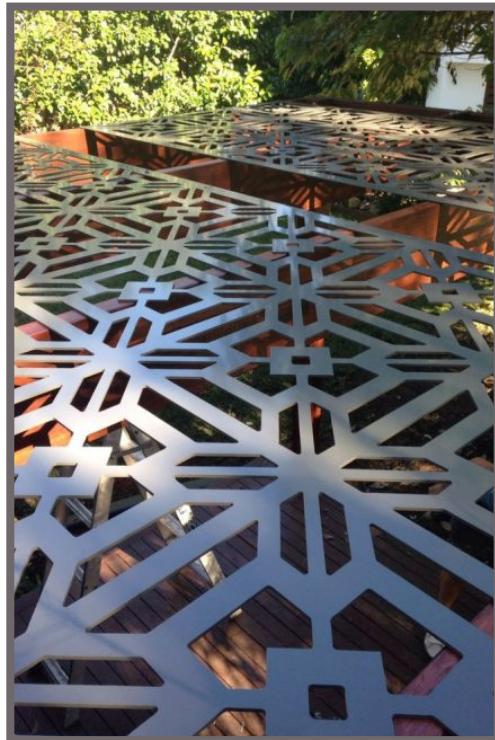




PERGOLAS AND SHADES

(Steel Panels: 1mm - 3mm)

(Aluminium Panels: 3mm, 4mm, 5mm)

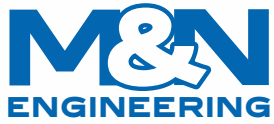




STEEL DOORS

(Steel Panels: 2mm - 8mm)

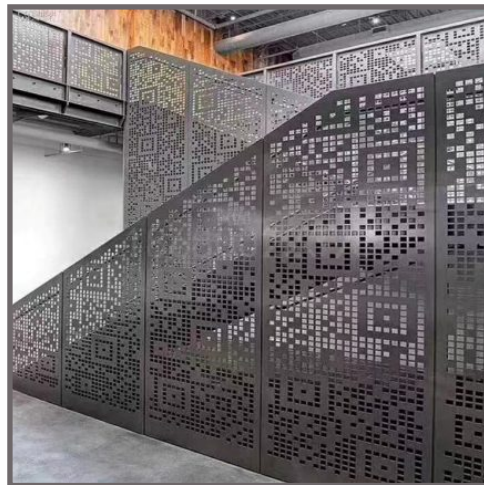
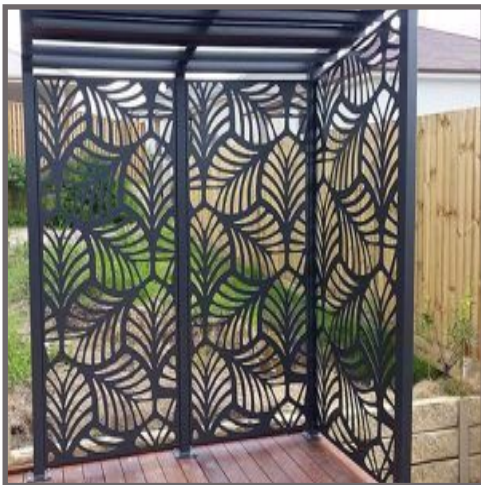
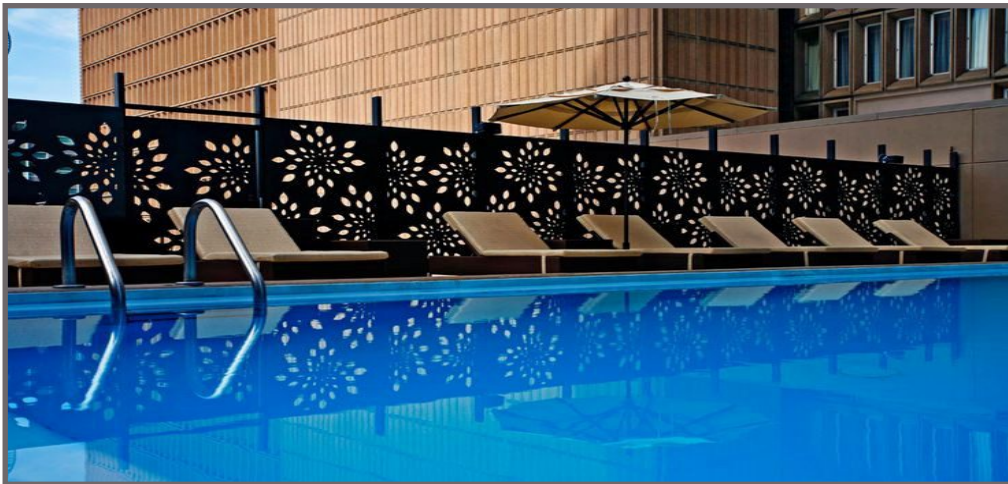


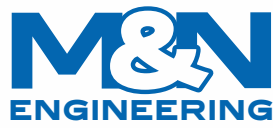


SCREENS AND DIVIDERS

(Steel Panels: 1mm - 8mm) (MDF, Plywood)

(Aluminium Panels: 3mm, 4mm, 5mm)

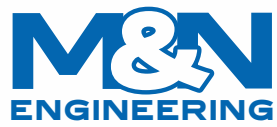




CEILING GRILLES

(Aluminium Panels: 3mm, 4mm, 5mm)
(MDF, Plywood)

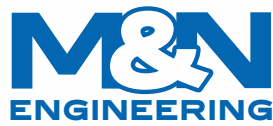




AIR CONDITIONER OUTDOOR UNIT GRILLES

(Steel Panels: 1mm - 3mm)

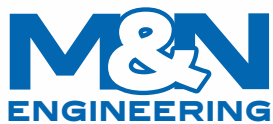




WALL ARTS

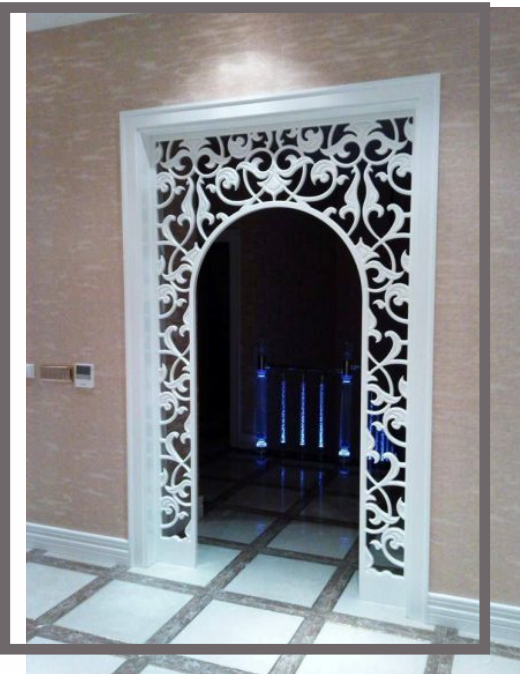
(Steel Panels: 1mm - 3mm)

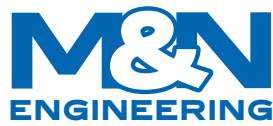




ENTRANCE GRILLES

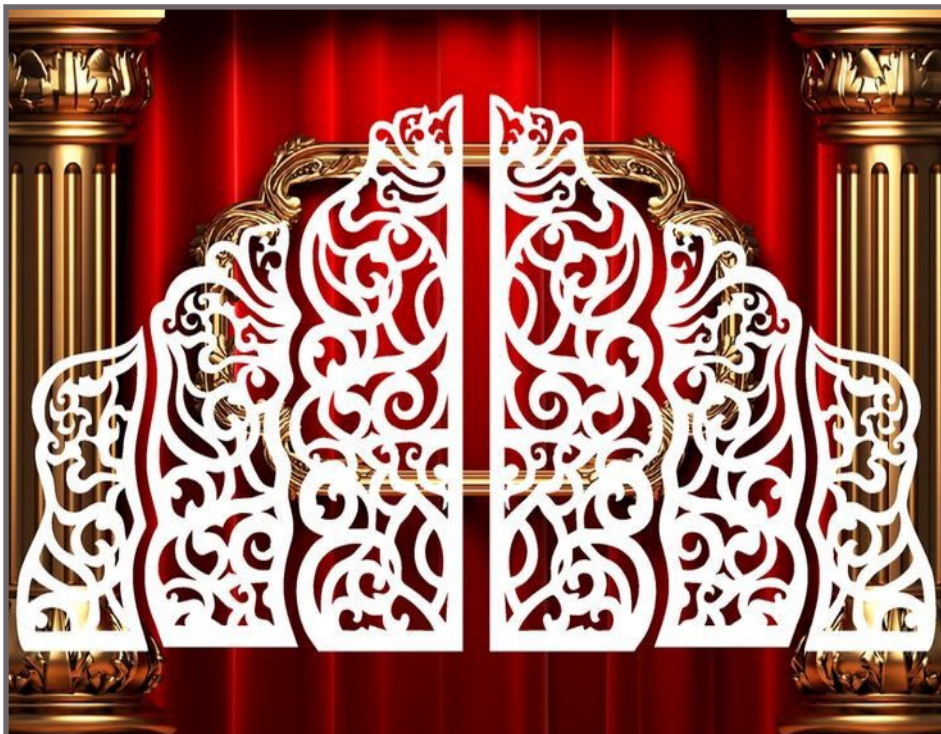
(Steel Panels 1mm - 8mm) (MDF, Plywood)
(Aluminium Panels: 3mm, 4mm, 5mm)

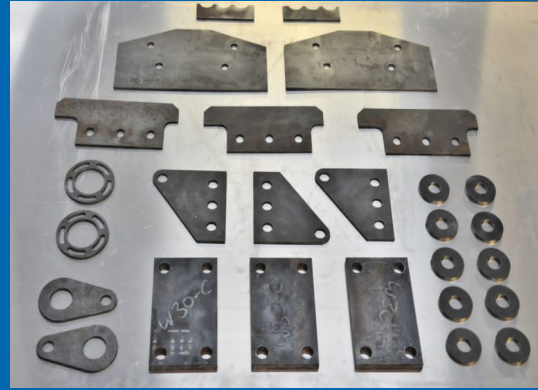




EVENT BACKDROPS

(Steel Panels: 1mm - 8mm)





Materials & Sizes

Facade and Exterior Screens

(Aluminium Composite Panels:
3mm, 4mm, 5mm)

Balcony Rails

(Steel Panels: 1mm - 8mm)
(Aluminium Panels: 3mm, 4mm
5mm)

Balustrades

(Steel Panels: 1mm - 8mm)
(Aluminium Panels: 3mm, 4mm
5mm)

Gates and Fence Grille

(Steel Panels: 1mm - 8mm)

Screens and Dividers

(Steel Panels: 1mm - 8mm)
(Aluminium Panels: 3mm,
4mm, 5mm)
(MDF, Plywood)

Pergolas And Shades

(Steel Panels: 1mm - 3mm)
(Aluminium Panels: 3mm, 4mm
5mm)

Steel Doors

(Steel Panels: 2mm - 8mm)

Ceiling Grilles

(Aluminium Panels: 3mm, 4mm
5mm)
(MDF, Plywood)

Air Conditioner Outdoor Unit Grilles

(Steel Panels: 1mm - 3mm)

Wall Art

(Steel Panels: 1mm - 3mm)

Entrance Grilles

(Steel Panels 1mm - 8mm)
(Aluminium Panels: 3mm, 4mm,
5mm)
(MDF, Plywood)

Machine Parts

Gears, Sprockets, Flanges Mild Steel
(25mm Max) Stainless Steel (12mm)

Metal Engraving

Mild Steel, Stainless Steel,
Aluminium



CNC Cutting & Engraving

• Laser • Plasma • Router

Location: Estate Junction, Kpone Road - Tema

Website: mandnengineering.com

Email: info@mandnengineering.com

   [mandnengineering](https://www.facebook.com/mandnengineering)

Tel: 054 283 2726

024 316 6661 / 055 839 0390